



[View this newsletter in your browser](#)

# ILLUMINATE

The Luminesce Alliance Newsletter



## Research & innovation conference

We were thrilled to support 2022 [Westmead Research and Innovation Conference](#) which brought together research, industry and health care delivery to connect, learn and be inspired.

The theme was the intersection of research and industry the August 18-19 conference displayed the world-class research undertaken at Westmead - as well as nationally and internationally - from a scientific, industry, and government perspective.



[L-R: Anai Gonzalez-Cordero, Michelle O'Hara-Wright, Benjamin Lim, Leszek Lisowski]

Congratulations to Children's Medical Research Institute's Stem Cell team members PhD student Benjamin Lim who won Best Student Poster Prize and Michelle O'Hara-Wright who won Best Rising Star Presentation. Associate Professor Leszek Lisowski, and Dr Anai Gonzalez-Cordero, also presented their work at the conference.

## ZERO National Symposium

**Towards Precision Oncology for All** is the theme for the inaugural Zero Childhood Cancer (ZERO) national symposium being held from the **26-27 October 2022 in Sydney**.

Bringing together leading national and international speakers at the cutting edge of childhood cancer research, the exciting two-day event is a unique opportunity for interdisciplinary exchange of progress and discoveries in the expansive field of paediatric oncology precision medicine.

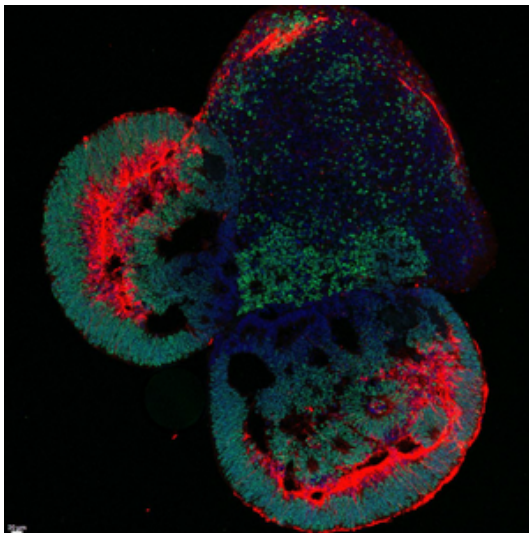


---

# Tiny models promise large returns

The **Stem Cell and Organoid Service Facility**, funded by Luminesce Alliance, is the only facility of its kind in Australia.

Its expert team, led by **Dr Anai Gonzalez Cordero**, has perfected the culturing of organoids from induced pluripotent stem cells (iPSCs) which, in turn, are generated from a patient's blood or skin. The organoids are often referred to as "mini organs" because they are so morphologically similar to actual organs, which has contributed to the rapid growth of this unique service.



***“Using organoids ... is relatively new and this is a service that has never been available before. Our hope is that it will speed up the development of safe and effective treatments for millions of children affected by genetic and acquired disorders.”***

Dr Anai Gonzalez Cordero.

The team's work was featured on the NSW Office of Health and Medical Research website.

[Read more](#)

---

## Most read paper

We are delighted that Professor Sandra Cooper and the team's paper on [Standardized practices for RNA diagnostics using clinically accessible specimens reclassifies 75% of putative splicing variants](#) has been identified as the most read 2022 paper in Genetics in Medicine - the official journal of The American College of Medical Genetics and Genomics.



## Watch ...

Congratulations to SCHN on the [Advanced Therapeutics Webinar](#) Series. The free bi-monthly series, features speakers who are world class experts in their respective fields, sharing the current and future work in the Advanced Therapeutics space.

We look forward to continuing our support of this work and sharing the exciting research that is occurring across the network with all our partners.



You can watch the series here, including the latest episode here - where SCNH Director of Research, Dr Paula Bray, hosts an expert discussion of the various aspects of the introduction of LUXTURNA as a life-changing therapy for an inherited blinding eye condition.

---

## Follow us



Our social media channels will help you stay up-to-date with all things Luminesce Alliance and help us to spread the word about our exciting research programs.

Find us on [Twitter](#), [LinkedIn](#), [Facebook](#), and [YouTube](#).

---

## Meet our researcher



## Kate Hetherington

Clinical Psychologist and Post-Doctoral Research Fellow in the Behavioural Sciences Unit (BSU) in the School of Clinical Medicine, UNSW

Kate's research will help to build in-depth understanding of the experiences of stakeholders involved in precision medicine for high-risk childhood cancer, including patients, their parents, the child's healthcare providers, and the scientists and other professional groups working behind the scenes to deliver precision medicine.

She's excited by the potential provided by Luminesce Alliance to improve outcomes for children and their families.

***“As a psychologist, the holistic focus that Luminesce Alliance takes to capturing the impact of novel and emerging treatments on families is also very exciting.”***

When not at work, you'll most likely find Kate hanging out with her children; swimming, bushwalking, or enjoying meals with friends and family.

---

## Watch...

... our explainer video.



## Events

The [Westmead Research Hub](#) hosts a series of Teams seminars on commercialisation.

**Market Access for Innovative Technologies:  
Registration and Reimbursement**

**Friday 9/9/2022  
12:00 PM - 1:00 PM**

Time zone: (UTC+10:00) Canberra,  
Melbourne, Sydney

Presenter Eugene Salole - a Principal at Value-Based Access (a consultancy firm specialising in market access for innovative health technologies) and an Adjunct Professor at the Faculty of Medicine at University of New South Wales - will provide an overview of what scientists looking to commercialise a medical technology should be considering from the outset.

[Register](#)

## Our partners



### Children's Medical Research Institute (CMRI)

Children's Medical Research Institute (CMRI) is an independent institute and the site of world-leading research in the areas of cancer, neurobiology, embryology, proteogenomics, and gene therapy, including eye genetics.

Located at Westmead, a major hub for research and medicine in NSW, CMRI is affiliated with the University of Sydney and is a founding partner of Luminesce Alliance and the Westmead Research Hub. CMRI is supported in part by its

[Find out more](#)

## Children's Cancer Institute (CCI)

The Children's Cancer Institute is the only independent medical research institute in Australia wholly dedicated to research into the causes, prevention and cure of childhood cancer.

Our focus is on translational research, and we have an integrated team of laboratory researchers and clinician scientists who work together to discover new treatments which can be progressed from the lab bench to the beds of children on wards in our hospitals as quickly as possible.

[Find out more](#)

## Sydney Children's Hospital Network (SCHN)

The Network – a partnership of Sydney Children's Hospital, Randwick and The Children's Hospital at Westmead – is committed to improving the health and wellbeing of children, through clinical care, research, education and advocacy.

Clinical research is conducted at Kids Research, the research division of SCHN. As Luminesce Alliance furthers new developments into Precision Medicine, Kids Research will play a significant role with the translation of new treatment methods for cancer and genetic diseases.

[Find out more](#)

## UNSW Sydney

Since our foundation in 1949, UNSW has aimed to improve and transform lives through excellence in research, outstanding education and a commitment to advancing a just society.

We are one of the leading research and teaching-intensive universities in the world, known for innovative, pioneering research and high quality education with a global impact.

[Find out more](#)



We are a world-renowned research institution, with 100 percent of our research ranked at world standard or above by the Australian Government's Excellence in Research for Australia report.

We're dedicated to understanding and solving the world's biggest healthcare challenges. We challenge barriers to universal health and wellbeing, and we're at the forefront of making and shaping the future of health.

[Find out more](#)

---

**If you have any feedback, or something you'd like to share  
in this newsletter, we'd love to hear from you.**

**Please contact: [info@luminesce.org.au](mailto:info@luminesce.org.au)**



---

Copyright © 2022 Luminesce Alliance, All rights reserved.

**Want to change how you receive these emails?**  
You can [update your preferences](#) or [unsubscribe from this list](#).